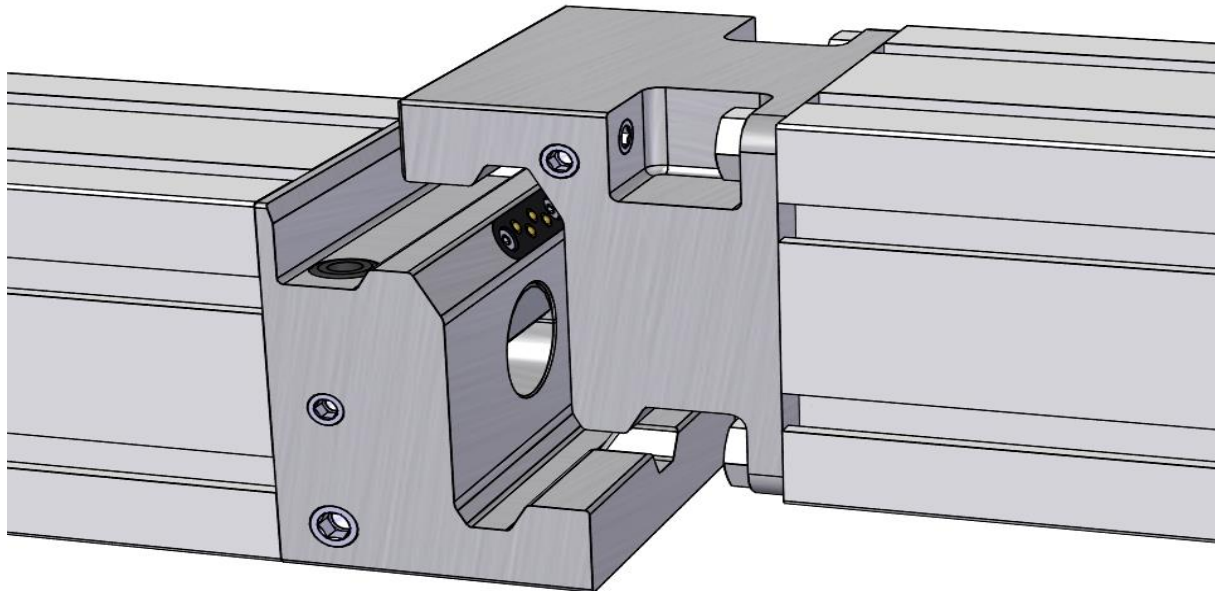


# Hydraulic Gripper Rail Coupling HK 100 Series

**SANDER**<sup>®</sup>  
AUTOMATION



## Application:

The HK100 hydraulic gripper rail coupling is used for automatic coupling of gripper rails in presses for sheet metal and solid forming. Just a vertical lift stroke of 8 mm is necessary for a full-automatic tool change.

## Advantages:

- Minimal setup times -> high flexibility
- Very small lift stroke (vertical)
- No manual dismantling of pneumatic and electrical connections
- No interference part (plug) on the gripper rail
- Very low weight
- Highest repeatability
- Designed for use with electrical bus systems
- High clamping forces and maximum stiffness

## Technical Data:

### Profile Coupling 100 x 100 mm

#### Electrical interface:

Communication:	4 contacts
Current per contact:	10 A
Voltage per contact:	24 V

#### Pneumatic interface:

Cross-section:	50.25 mm <sup>2</sup>
Operating pressure:	10 bar

#### Mechanical characteristics:

Transmitting torques:	3000 Nm
Tractive power:	25 kN

#### Physical characteristics:

Installation space:	100x92x100mm
Weight per pair:	4 kg